



# CENTRAL HIGHLAND PARK NEIGHBORHOOD - PHASE 2

## Street Improvement Project No. 841099.09

### Storm Sewer Improvement Project No. 501107.10

#### SE INDIANA AVENUE

**Know what's below. Call 811 before you dig  
or visit us at [www.kansasonecall.com](http://www.kansasonecall.com)**

"Kansas One-Call" is the Underground Utility Notification center for the State of Kansas. Through this facility, you can notify operators of underground facilities of proposed excavations to request that the underground facilities be marked before you dig.

Kansas Statute annotated #66-1801 through #66-1815 requires anyone who engages in any type of excavation to provide advance notice of at least two full working days, but not more than 15 calendar days, excluding weekends and holidays.

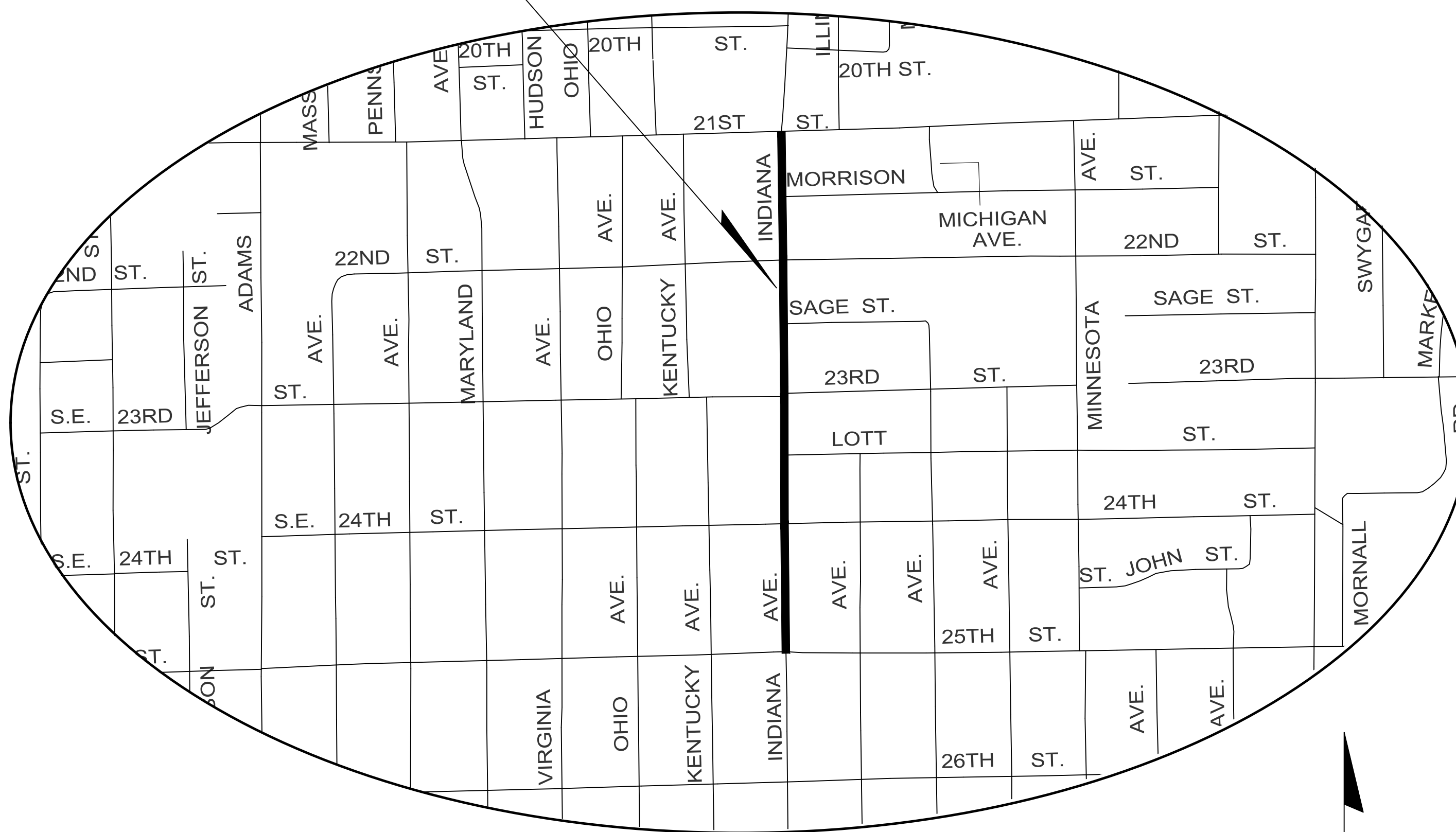
The person who is doing the work is responsible for calling Kansas One-Call. If the owner contracts with a professional excavator to do the excavation, then the professional excavator is responsible for calling Kansas One-Call.

The service provided by Kansas One-Call to excavators is free of charge.

Call 785-368-3111 for emergencies with City of Topeka utilities.



Project Locations



**LOCATION MAP**  
No Scale



**INDEX to SHEETS**

Sheet	Title
01	Title Sheet
02	General Notes & Quantity Recap
03	Typical Sections
04-08	Plan & Profile Indiana Street
09	Storm Sewer Plan and Profile
10-13	Intersection Details
14-23	Construction Standards
24-26	Pavement Marking and Striping Plan
27-29	Pavement Marking Standards
30-35	Traffic Control Plan
36-42	Traffic Control Standards
43-44	Erosion Control Plan
45-46	Erosion Control Standards
47-66	Indiana Cross Sections

**UTILITY OWNER CONTACTS**

<p><b>Cable TV</b> Cox Communications 931 SW Henderson Rd. Topeka, KS 66615 Dean Cape (785)320-0308(cell) dean.cape2@cox.com</p>	<p><b>Gas</b> Kansas Gas Service 200 E 1st St. Topeka, KS 66603-3603 Anna Frizell (785)431-4276 (785)438-7017(cell) anna.frizell@onegas.com Gas Leaks 1-888-482-4950 &amp; call 911 immediately</p>	<p><b>Sanitary/Storm Sewer</b> City of Topeka, WPC Dist. 1115 NE Poplar St. Topeka, KS 66616 Darrin A. Coffland (785)368-2467 dcoffland@topeka.org</p>
<p><b>Electric</b> Evergy PO Box 889 4001 NW 14th St. Topeka, KS 66603 Jenny Rohr (785)580-2123 Jennifer.Rohr@evergy.com</p>	<p><b>Telephone</b> AT&amp;T Corp. 220 SE 6th Ave., Ste.236 Topeka, KS 66603 Ezra Brown (785)596-9905 eb409q@att.com</p>	<p><b>Water</b> City of Topeka, Water Dist. 3245 NW Waterworks Dr. Topeka, KS 66606 Duncan Theuri (785)368-0152 dtheuri@topeka.org</p>

<p><b>Fiber Optic - City of Topeka</b> City of Topeka, Inf. Tech. 620 SE Madison St., 3rd Flr. Topeka, KS 66603 Wesley L. White (785)338-2633 wlwhite@topeka.org</p>	<p><b>Traffic Signal</b> City of Topeka, Traf. Ops. 927 NW Harrison St. Topeka, KS 66612 Duane Morris (785)368-3913 dmorris@topeka.org</p>
<p><b>Fiber Optic - LUMEN</b> LUMEN 711 E. 19th St. Kansas City, MO 64108 Rick Redel (816)518-2804 richard.redel@lumen.com Relocations : relocations@lumen.com</p>	<p><b>Fiber Optic - AT&amp;T Transmission</b> AT&amp;T Services, Inc. 1425 Oak Street Kansas City, MO 64016 Lenny Vohs (770)335-8244 lv2121@att.com</p>
<p><b>Fiber Optic - USD 501</b> USD 501, Info. Tech. 1900 SW Hope St. Topeka, KS 66604 Joergen Laigaard (785)438-4750 jlaigaard@tps501.org</p>	<p><b>Fiber Optic - Giant Communications</b> Giant Communications 515 S Kansas Ave. Suite 210 Topeka, KS 66603 Lance Lyman (785)362-3312 lancelyman@giantcomm.net</p>

<p><b>Fiber Optic - KsFiberNet</b> Kansas Fiber Network LLC 10875 Benson, Suite 250 Overland Park, KS 66210 Brad Burger (913)213-2937 bburger@ksfiber.net</p>	<p><b>Telephone/Fiber Optics</b> Verizon/MCI Jeffrey Wiard (620)242-6647 Jeffrey.Wiard@verizonwireless.com</p>
---	--

**GENERAL NOTE:**  
All construction methods and materials used in the construction of the improvements covered by these plans shall be in accordance with the Standard Technical Specifications and addendum's to the (STS) on file in the office of the City Engineer, City of Topeka, Kansas.

CITY OF TOPEKA, KANSAS	
DEPARTMENT OF PUBLIC WORKS - ENGINEERING DIVISION	
RELEASED FOR CONSTRUCTION	
Mark Schreiner	2/12/2026
CITY ENGINEER	DATE
ATTEST:	
Erinda Younger	2/24/2026
CITY CLERK	DATE
REVIEWED BY	
Zachary Paul Steere	2/20/2026
UTILITIES	DATE

PLANS PREPARED BY:

**CFS ENGINEERS**  
cfse.com

2930 SW Woodside Dr, Topeka, KS 66614  
o: 785-272-4706 f: 785-272-4736

<b>UTILITY OWNERS LOCATION MAP SHEET INDEX LEGEND</b>	DATE: Feb. 2026
	SHEET: 01 of 66
	PROJ.: 841099.09 501107.10

1. ALL CONSTRUCTION METHODS AND MATERIALS USED IN THE CONSTRUCTION OF THE IMPROVEMENTS COVERED BY THESE PLANS SHALL BE IN ACCORDANCE WITH THE STANDARD TECHNICAL SPECIFICATIONS AND CURRENT REVISIONS ON FILE IN THE OFFICE OF THE CITY ENGINEER, CITY OF TOPEKA, SHAWNEE COUNTY, KANSAS. THE CITY ENGINEERS DECISIONS ON QUESTIONS REGARDING THESE PLANS SHALL GOVERN.

2. THE LOCATION OF ALL UNDERGROUND UTILITIES MAY VARY FROM WHAT IS INDICATED IN THESE PLANS. IT SHALL BE THE CONTRACTOR'S RESPONSIBILITY TO COORDINATE WITH THE UTILITY OWNER TO LOCATE AND FLAG ALL UNDERGROUND UTILITIES WHETHER INDICATED OR NOT. NO EXCAVATION SHALL BE PERMITTED IN THE AREA OF UNDERGROUND UTILITIES UNTIL ALL SUCH UTILITIES HAVE BEEN LOCATED AND IDENTIFIED TO THE SATISFACTION OF ALL PARTIES. ANY DAMAGE TO THE UTILITY SHALL BE REPAIRED OR REPLACED BY THE UTILITY COMPANY AT THE EXPENSE OF THE CONTRACTOR.

3. ALL PROPERTY PINS DISTURBED BY CONSTRUCTION SHALL BE REPLACED BY A LICENSED ENGINEER OR LAND SURVEYOR. THIS WORK SHALL BE SUBSIDIARY TO OTHER ITEMS OF THE CONTRACT.

4. FULL DEPTH SAWCUTS SHALL BE USED TO REMOVE A PORTION OF PAVEMENT OR CURB AND GUTTER. ALL SAWCUTS SHALL BE FULL DEPTH AND SHALL BE SUBSIDIARY TO OTHER BID ITEMS.

5. CONTRACTOR SHALL MAINTAIN CONSTRUCTION LIMITS WITHIN THE EXISTING RIGHT-OF-WAY.

6. CONTRACTOR SHALL SUBMIT A DETAILED WRITTEN TRAFFIC CONTROL PLAN FOR ALL PHASES OF THE PROJECT. CONTRACTOR SHALL ADHERE TO THE TRAFFIC SEQUENCING IN THE PLANS, UNLESS OTHERWISE APPROVED BY THE CITY OF TOPEKA.

7. CONTRACTOR PROVIDED TRAFFIC CONTROL SHALL ADHERE TO THE MANUAL ON UNIFORM TRAFFIC CONTROL DEVICES (MUTCD) AND THE TYPICAL DETAILS SHOWN IN THE PLAN SET. CONTRACTOR SHALL COMMUNICATE AND COORDINATE WITH HOMEOWNERS. MINIMUM HOMEOWNER ACCESS REQUIREMENTS ARE REQUIRED - SEE SPECIAL PROVISIONS IN THE CONTRACT DOCUMENTS FOR PERFORMANCE SPECIFICATION OF HOMEOWNER ACCESS.

8. THE CONTRACTOR SHALL SUBMIT TO THE ENGINEER, FOR APPROVAL, A DETAILED WORK SCHEDULE OUTLINING ESTIMATED TIME PERIODS FOR CONSTRUCTION OF SEGMENTS.

9. THE CONTRACTOR WILL BE RESPONSIBLE FOR ORDERING THE PROJECT SIGNS FROM THE CITY OF TOPEKA ON-CALL SIGN CONTRACTOR, WHICH IS ALL SIGNS, LLC, AND WILL ALSO BE RESPONSIBLE FOR PAYING ALL SIGNS, LLC. FOR THE SIGNS AT THE ESTABLISHED MATERIAL COSTS. THE SIGN DETAIL IS SHOWN ON CITY STANDARD DT-019. ANY ADDITIONAL COST TO INSTALL, MAINTAIN, AND REMOVE THE SIGNS AFTER PROJECT COMPLETION SHALL NOT BE PAID FOR DIRECTLY, BUT SHALL BE CONSIDERED SUBSIDIARY TO THE BID ITEM "PROJECT SIGN". CONTRACTOR SHALL RETAIN OWNERSHIP OF THE SIGN(S) UPON COMPLETION OF THE PROJECT. ONLY SIGNS IN NEW CONDITION SHALL BE INSTALLED AT THE COMMENCEMENT OF A PROJECT.

10. TRAFFIC CONTROL SHOWN IN PLANS AND TRAFFIC CONTROL DEVICES TABULATION ARE SHOWN FOR INFORMATION ONLY. ALL DEVICES AND FLAGGER OPERATIONS SHALL NOT BE PAID FOR DIRECTLY, BUT SHALL BE CONSIDERED SUBSIDIARY TO THE BID ITEM "TRAFFIC CONTROL (L.S.)"

11. ALL DISTURBED AREAS WITHIN THE RIGHT-OF-WAY SHALL BE SEEDED IN ACCORDANCE WITH THE PLANS AND SPECIFICATIONS, AND PAID BY THE BID ITEM "SEEDING - LS". IN THE EVENT THAT THE DISTURBED AREAS EXCEEDS THE CONSTRUCTION LIMITS SHOWN ON THE PLANS, THOSE AREAS SHALL BE SEEDED. THESE ADDITIONAL AREAS SHALL NOT BE PAID FOR DIRECTLY, BUT SHALL BE CONSIDERED SUBSIDIARY TO THE BID ITEM "SEEDING - LS". AREA ADDITIONS MAY BE DEEMED NECESSARY BY THE OWNER FOR REASONS INCLUDING BUT NOT LIMITED TO: HEAVY EQUIPMENT TRACKING, WHEEL RUTTING, AND TEMPORARY STORAGE OF MATERIALS ON EXISTING GREENSPACE AREAS, OR OTHER CONTRACTOR RELATED EVENTS THAT CAUSE ADDITIONAL DISTURBED AREAS. IN THE EVENT OF WHEEL RUTTING, CONTRACTOR MAY BE REQUIRED TO PROVIDE BLACK TOPSOIL PRIOR TO SEEDING TO BRING THE GROUND BACK TO LEVEL. LABOR AND MATERIALS TO REPAIR WHEEL RUTTING SHALL NOT BE PAID FOR DIRECTLY, BUT SHALL BE CONSIDERED SUBSIDIARY TO THE BID ITEM "SEEDING - LS". ALL SEEDING SHALL BE COMPLETED WITHIN THE TIMEFRAME SPECIFIED IN THE CITY OF TOPEKA SPECIFICATIONS.

12. TEMPORARY EROSION POLLUTION CONTROL STANDARD DETAILS HAVE BEEN INCLUDED. CONTRACTOR SHALL BE REQUIRED TO MEET OR EXCEED THE REQUIREMENTS OF THE STANDARD TECHNICAL SPECIFICATIONS OF THE CITY OF TOPEKA. OWNER RESERVES THE RIGHT TO UNDER-RUN OR OVER-RUN TEMPORARY EROSION CONTROL RELATED ITEMS AS FIELD CONDITIONS ALLOW.

13. SUITABLE BACKFILL MATERIAL SHALL BE ACQUIRED FROM ON SITE MATERIALS, UNLESS OTHERWISE REJECTED ON THE BASIS OF CITY OF TOPEKA SPECIFICATIONS.

14. HAUL AND WASTE IS SUBSIDIARY TO OTHER ITEMS IN CONTRACT.

15. EXISTING CURB AND GUTTER REMOVAL IS INCLUDED IN PAVEMENT REMOVAL QUANTITY. THE CURB AND GUTTER REMOVAL SHALL BE COMPLETED IN PHASES (SEE PHASING PLAN) THAT REQUIRE SAW CUTS ALONG THE ENTIRE LENGTH OF CURB IN THE ASPHALT ROADWAY. SAW CUTS ARE REQUIRED A SHORT DISTANCE FROM THE EDGE OF CURB PRIOR TO REMOVAL TO MAKE SUFFICIENT ROOM FOR CURB FORMS. SAW CUTS SHALL NOT BE PAID FOR DIRECTLY, BUT SHALL BE CONSIDERED SUBSIDIARY TO OTHER ITEMS.

QUANTITY RECAP			
Item	Description	Quantity	Units
1	Mobilization	1	L.S.
2	Pavement Removal	9,088	S.Y.
3	6" Aggregate Base, Type AB-3	9,174	S.Y.
4	8" Non-Reinforced Concrete Pavement	433	S.Y.
5	Concrete Valley Gutter	367.4	S.Y.
6	6" Concrete Driveway	4,002	S.F.
7	Combined Curb & Gutter, Type II	4,973	L.F.
8	4" Concrete Sidewalk, 5' Wide	382	S.F.
9	Sidewalk Ramp	569	S.F.
10	Adjust Existing Manhole Cover	18	EACH
11	Adjust Existing Valve Cover	4	EACH
12	Remove and Replace Curb Inlet Top, Type I, L=11 ft.	3	EACH
13	Remove and Replace Curb Inlet Top, Type I, L=10 ft.	2	EACH
14	Remove and Replace Curb Inlet Top, Type I, L=7 ft.	10	EACH
15	Remove and Replace Curb Inlet Top, Type I, L=6 ft.	5	EACH
16	15" Storm Sewer (RCP), Class III	73	L.F.
17	15" End Section (RCP)	1	EACH
18	Curb Inlet, Type II-P	1	EACH
19	Connect to Existing Structure	1	EACH
20	Large Tree Removal	1	EACH
21	Clearing and Grubbing	1	L.S.
22	Contractor Construction Staking	1	L.S.
23	Inlet Protection (Curb)	26	EACH
24	Mailbox Remove and Reset	32	EACH
25	Pavement Marking(Epoxy)(Yellow)(4")	4,114	L.F.
26	Pavement Marking(Epoxy)(White)(Sharrow)	24	EACH
27	Temporary Seeding & Mulching	0.4	ACRES
28	Sodding	1,660	S.Y.
29	Sign (Remove and Reset)	13	EACH
30	Driveway Entrance Access Provisions	1	L.S.
31	Traffic Control	1	L.S.

ADD ALTERNATE 1  
(Asphalt Street Option)

Item	Description	Quantity	Units
A1.1	Unclassified Excavation	3,430	C.Y.
A1.2	9" Asphaltic Concrete Pavement	6,272	S.Y.

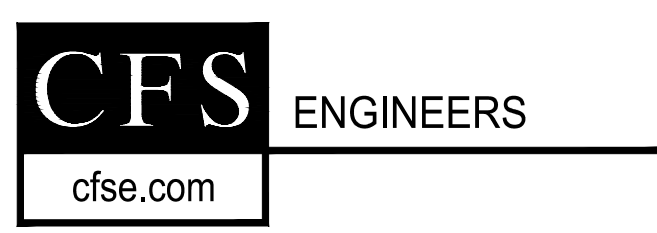
ADD ALTERNATE 2  
(Concrete Street Option)

Item	Description	Quantity	Units
A2.1	Unclassified Excavation	2,890	C.Y.
A2.2	7" Reinforced Concrete Pavement	6,272	S.Y.

G:\Shared drives\231016\CADD\Year 2\231016-Ph2 Gen Notes & Qty Recap.dwg

NO.	DATE:	REVISION	BY:	APP'D

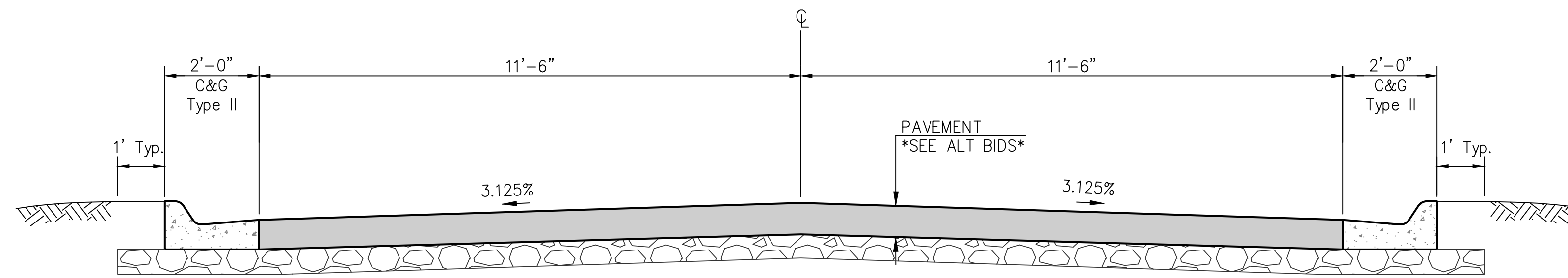
DRAWN BY: ATP  
APP'D BY: MJM



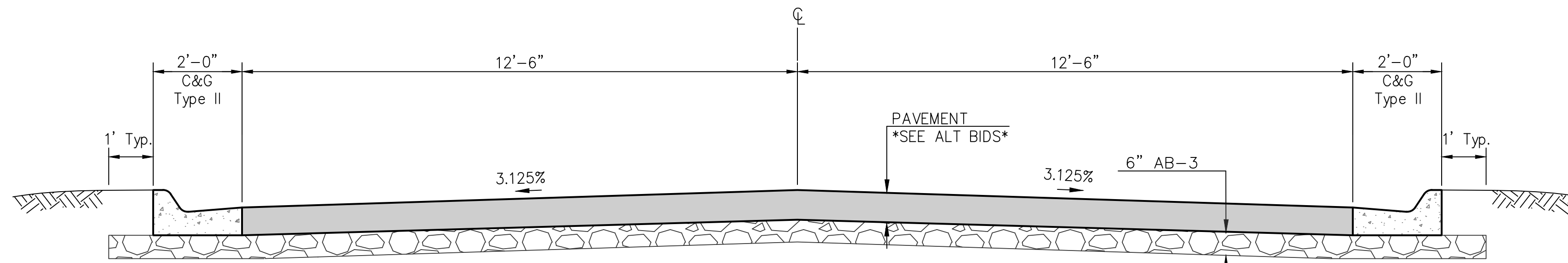

STREET IMPROVEMENT  
CITY OF TOPEKA  
SE INDIANA STREET

GENERAL NOTES AND  
QUANTITIES RECAP

DATE: Feb. 2026  
SHEET: 02 of 66  
PROJ.: 841099.09  
501107.10



TYPICAL SECTION  
SE INDIANA AVE.  
Sta. 100+85.32 to 113+20.00

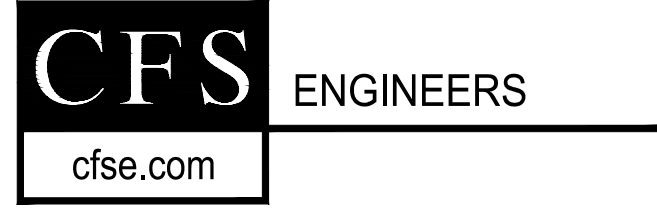


TYPICAL SECTION  
SE INDIANA AVE.  
Sta. 113+92.50 to 124+85.00

G:\Shared drives\231016\CADD\Year 23\231016-PH2 Gen Notes & Qty Recap.dwg

NO.	DATE:	REVISION	BY:	APP'D

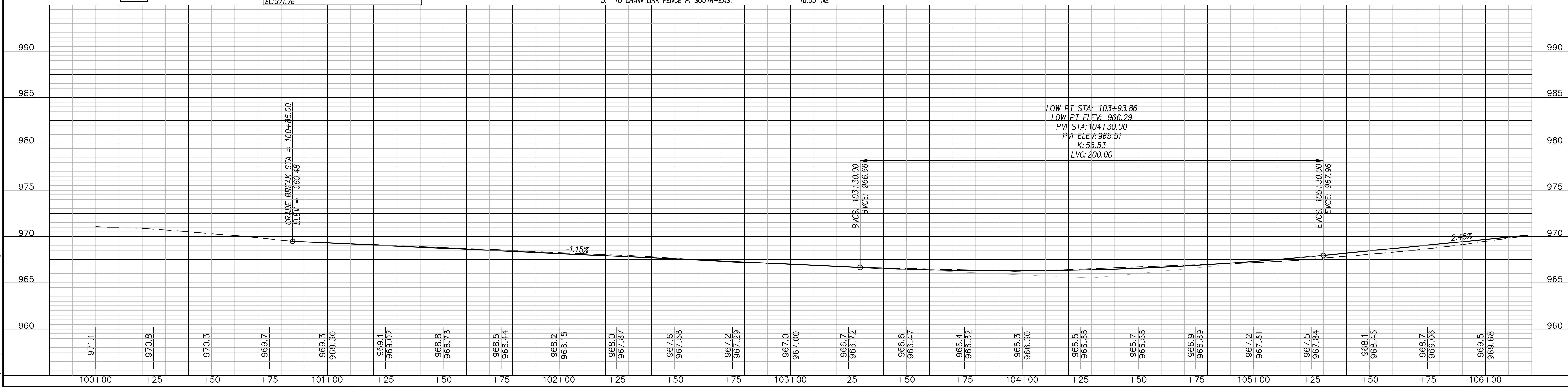
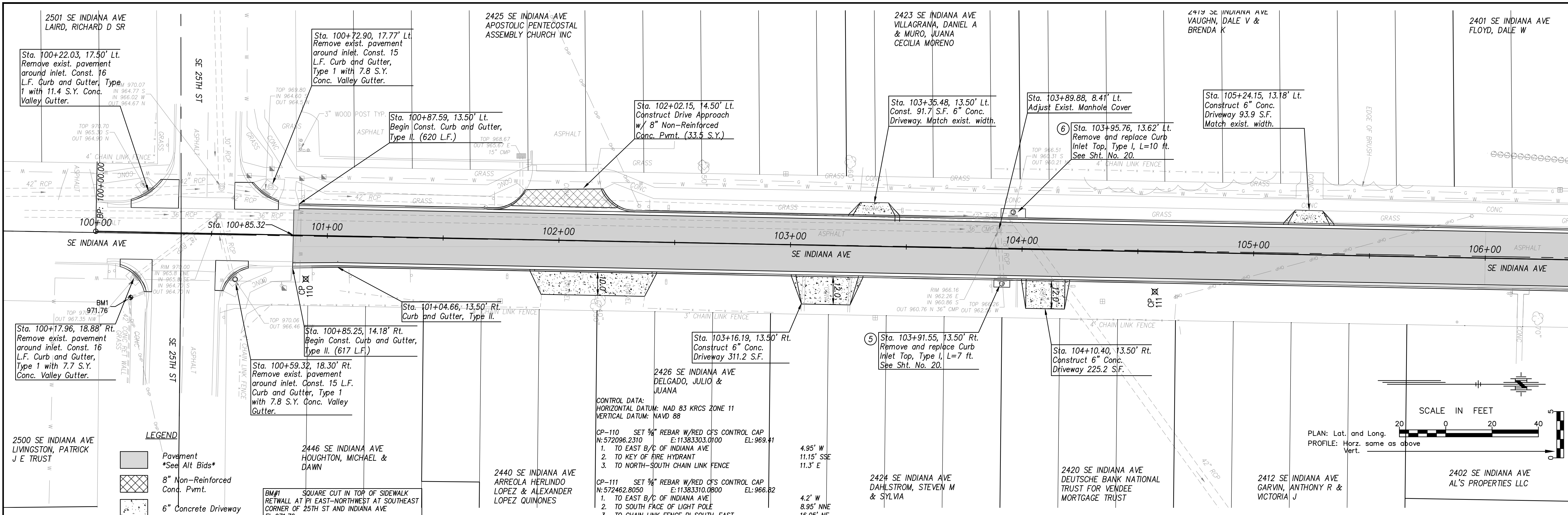
DRAWN BY: ATP  
APP'D BY: MJM



STREET IMPROVEMENT  
CITY OF TOPEKA  
SE INDIANA STREET

TYPICAL SECTIONS

DATE: Feb. 2026  
SHEET: 03 of 66  
PROJ.: 841099.09  
501107.10



NO.	DATE	REVISION	BY	APP'D

DRAWN BY: **AJP**  
 APP'D BY: **MJM**

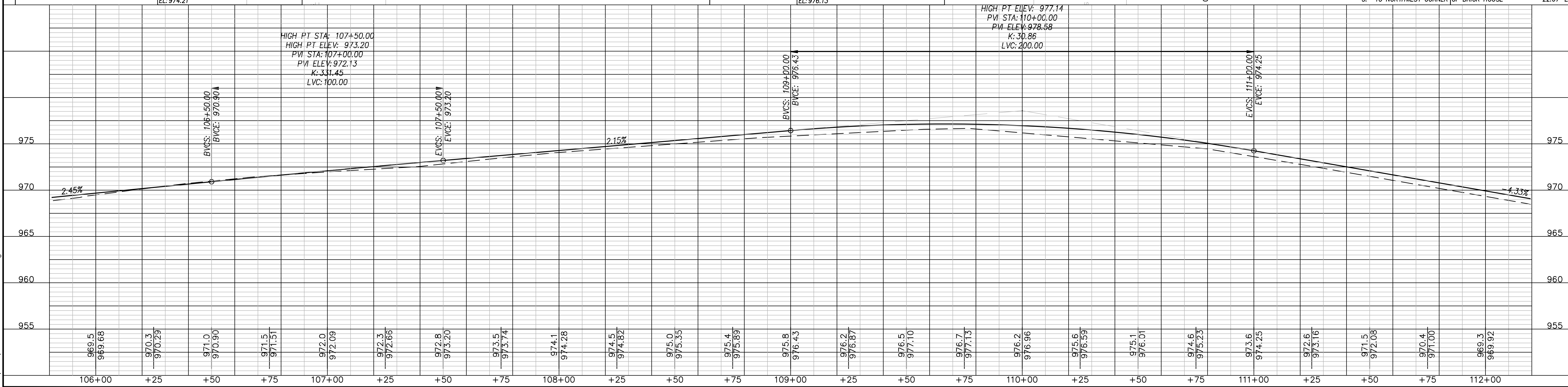
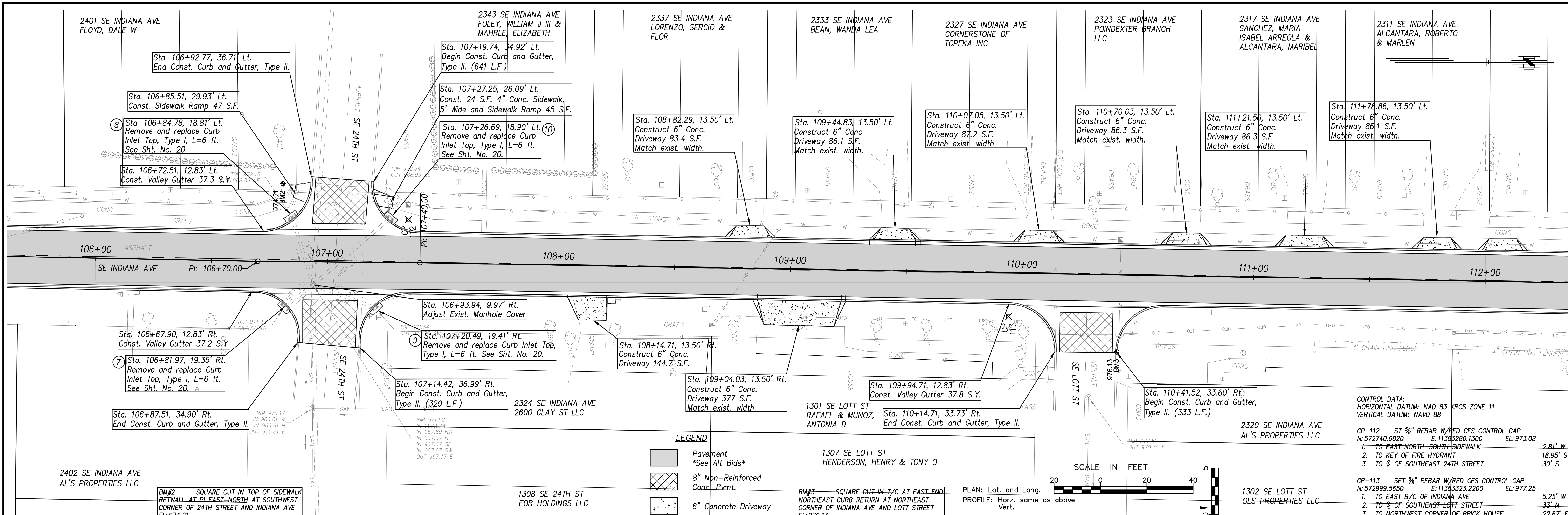
**CFS** ENGINEERS  
 cfse.com

**TOPEKA**  
 Public Works  
 ENGINEERING  
 620 SE MADISON ST. • 2nd Floor • TOPEKA, KS 66607  
 Phone: (785) 368-3842 • Fax: (785) 368-3881

STREET IMPROVEMENT  
 CITY OF TOPEKA  
 SE INDIANA STREET

PLAN AND PROFILE  
 SE INDIANA STREET

DATE: Feb. 2026  
 SHEET: 04 of 66  
 PROJ.: 841099.09  
501107.10



NO.	DATE	REVISION	BY	APP'D

DRAWN BY: AJP  
 APP'D BY: MJM

**CFS ENGINEERS**  
 cfse.com

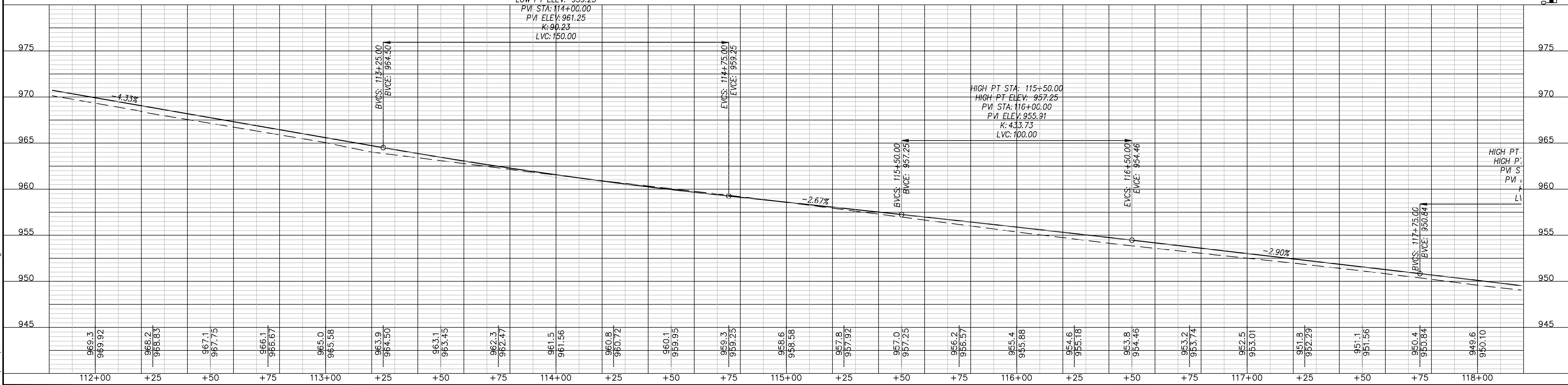
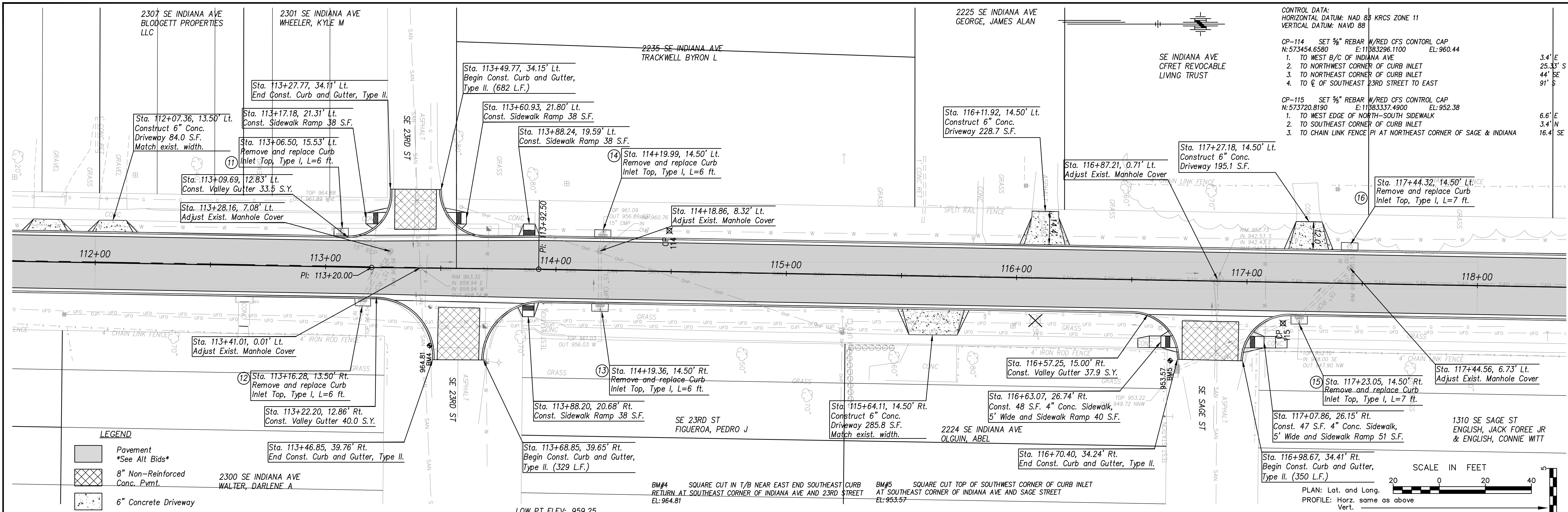
**TOPEKA Public Works ENGINEERING**  
 620 SE MADISON St. • 2nd Floor • TOPEKA, KS 66607  
 Phone: (785) 368-3842 • Fax: (785) 368-3881

**STREET IMPROVEMENT**  
 CITY OF TOPEKA  
 SE INDIANA STREET

**PLAN AND PROFILE**  
 SE INDIANA STREET

DATE: Feb. 2026  
 SHEET: 05 of 76  
 PROJ.: 841099.09  
 501107.10

G:\Shared drives\231016\CADD\Year 2\231016\PI12-Plan Profile-Indiana.dwg



NO.	DATE	REVISION	BY	APP'D

DRAWN BY: **AJP**  
 APP'D BY: **MJM**

**CFS ENGINEERS**  
 cfse.com

**TOPEKA Public Works ENGINEERING**  
 620 SE MADISON St. • 2nd Floor • TOPEKA, KS 66607  
 Phone: (785) 368-3842 • Fax: (785) 368-3881

**STREET IMPROVEMENT**  
 CITY OF TOPEKA  
 SE INDIANA STREET

**PLAN AND PROFILE**  
 SE INDIANA STREET

DATE: Feb. 2026  
 SHEET: 06 of 76  
 PROJ.: 841099.09  
501107.10

G:\Shared drives\231016\CADD\Year 2\231016\PI12-Plan Profile-Indiana.dwg

**CONTROL DATA:**  
 HORIZONTAL DATUM: NAD 83 KRCS ZONE 11  
 VERTICAL DATUM: NAVD 88

**CP-116 SET 5/8" REBAR W/RED CFS CONTROL CAP**  
 N: 574043.5480 E: 11383306.2400 EL: 943.55  
 1. AT NORTHWEST CORNER OF INDIANA AVE AND SOUTHEAST 22ND STREET  
 2. TO C OF FIRE HYDRANT KEY 6' NNW  
 3. TO C OF WATER VALVE 12.92' SSE  
 4. TO C OF WATER VALVE 13.44' SSW

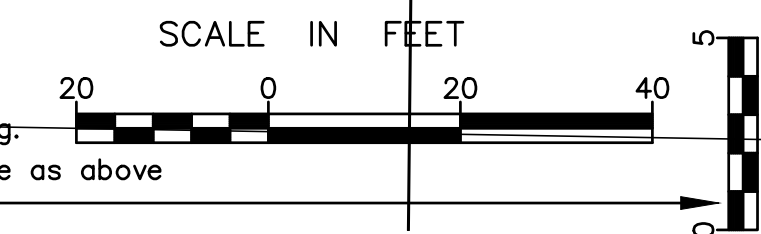
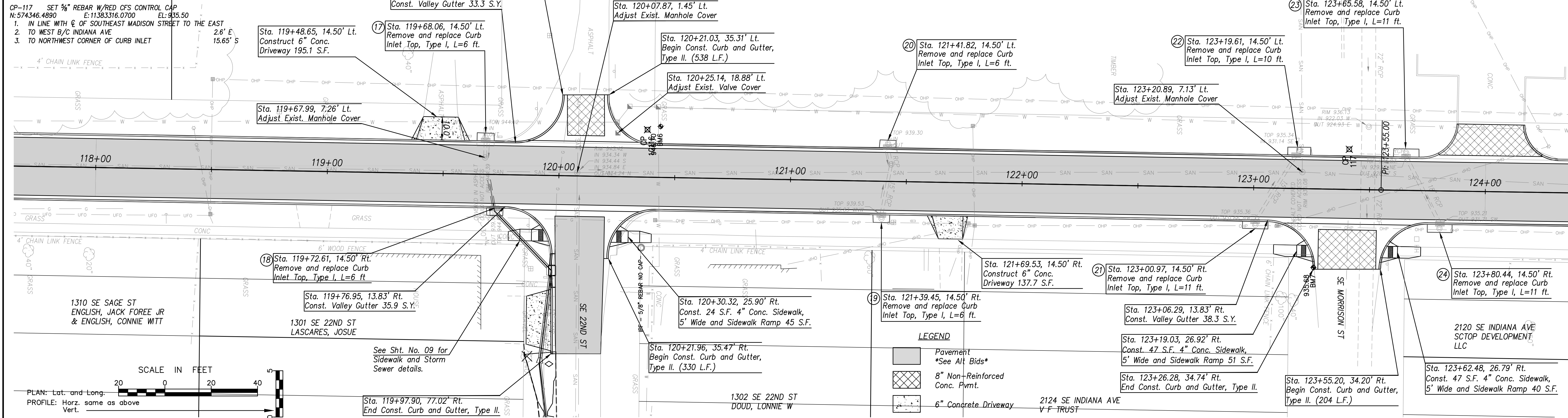
**CP-117 SET 5/8" REBAR W/RED CFS CONTROL CAP**  
 N: 574346.4890 E: 11383316.0700 EL: 935.50  
 1. IN LINE WITH C OF SOUTHEAST MADISON STREET TO THE EAST 26' E  
 2. TO WEST B/C INDIANA AVE 15.65' S  
 3. TO NORTHWEST CORNER OF CURB INLET

2201 SE INDIANA AVE  
 HOWELL, KENNETH  
 DALE

**BM#6 "X" CUT IN TOP OF EAST HEX BOLT OF FIRE HYDRANT AT NORTHWEST CORNER OF INDIANA AVE AND 22ND STREET**  
 EL: 946.70

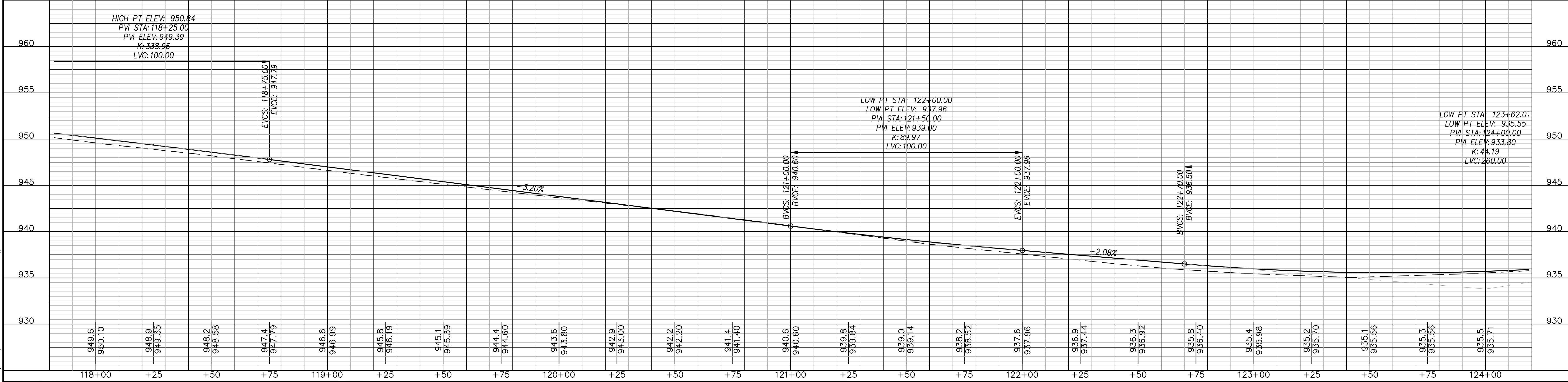
2135 SE INDIANA AVE  
 FULL GOSPEL LIGHTHOUSE  
 CHURCH, WRIGHT, LARRY L &  
 ALLENSWORTH, BRANDON TYLER

**BM#7 SQUARE CUT IN T/C AT EAST END OF SOUTHEAST CURB RETURN AT SOUTHEAST CORNER OF INDIANA AVE AND MORRISON STREET**  
 EL: 935.68



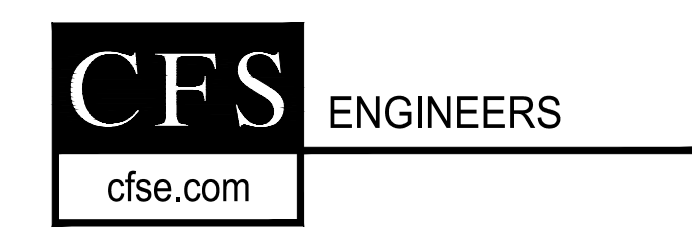
**LEGEND**

- Pavement  
\*See Alt Bids\*
- 8" Non-Reinforced Conc. Pvm.
- 6" Concrete Driveway



NO.	DATE	REVISION	BY	APP'D

DRAWN BY: **ATP**  
 APP'D BY: **MJM**



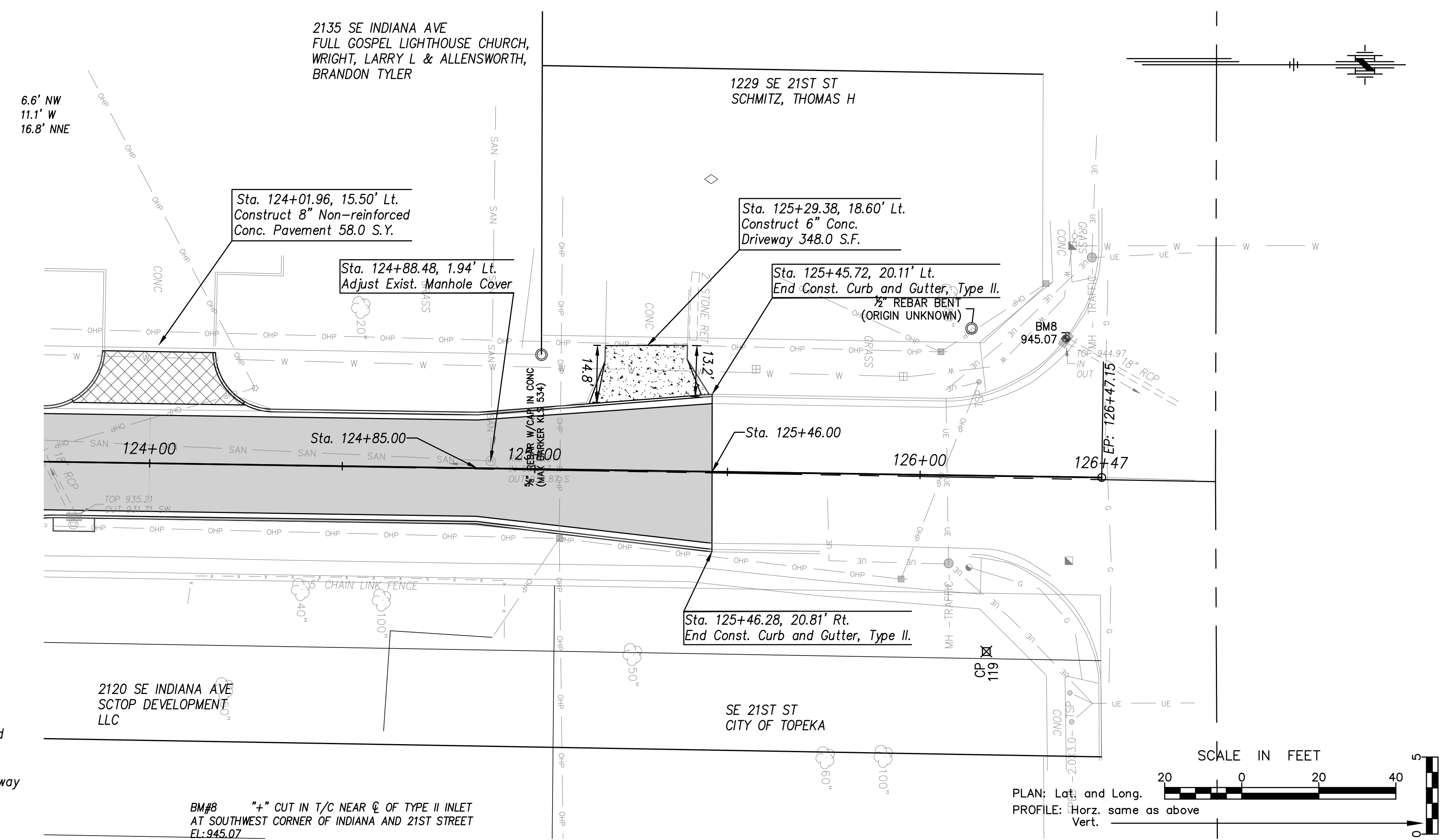
STREET IMPROVEMENT  
 CITY OF TOPEKA  
 SE INDIANA STREET

PLAN AND PROFILE  
 SE INDIANA STREET

DATE: Feb. 2026  
 SHEET: 07 of 76  
 PROJ.: 841099.09  
 501107.10

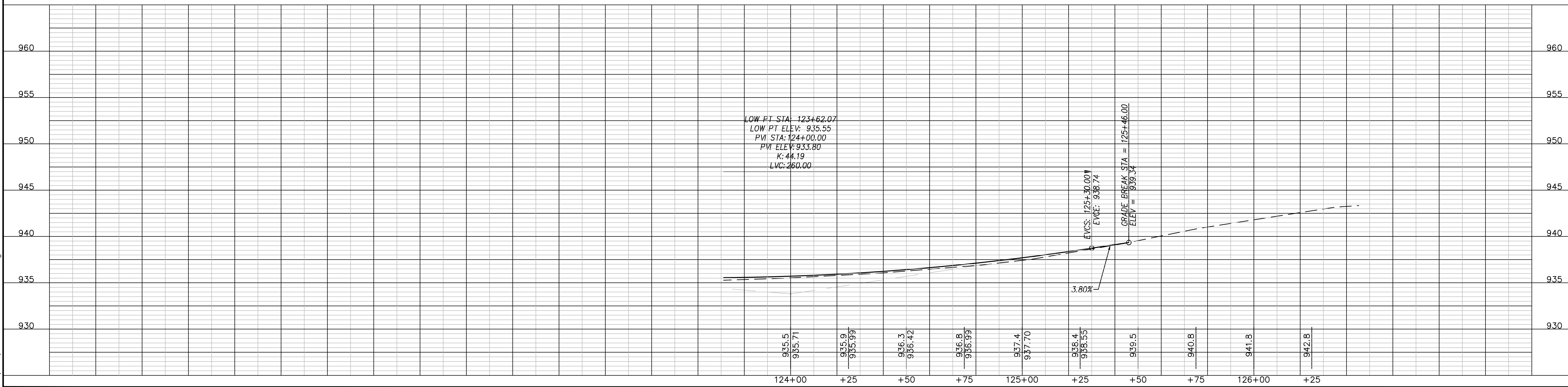
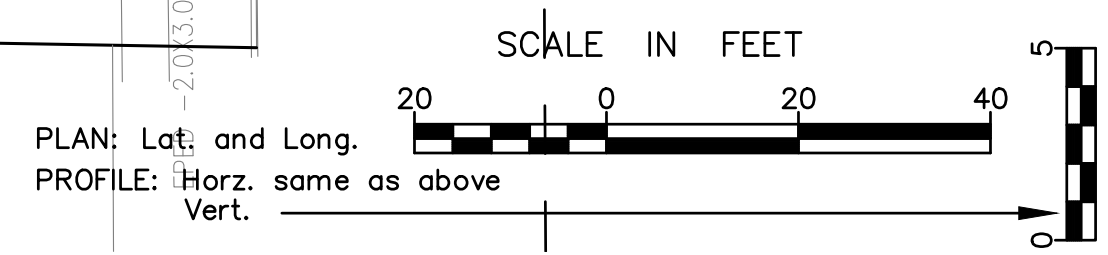
G:\Shared drives\231016\CADD\Year 23\231016 PH2-Plan Profile-Indiana.dwg

CONTROL DATA:  
 HORIZONTAL DATUM: NAD 83 KRCS ZONE 11  
 VERTICAL DATUM: NAVD 88  
 CP-119 SET 3/8" REBAR W/RED CFS CONTROL CAP  
 N: 574622.0630 E: 11363384.4900 EL: 941.81  
 1. AT SOUTHEAST CORNER OF INDIANA AVE AND 21ST STREET  
 2. TO SOUTHEAST EDGE OF NORTHEAST-SOUTHWEST SIDEWALK  
 3. TO SIDEWALK PI SOUTH-NORTHEAST  
 4. TO SIDEWALK PI SOUTHWEST-EAST



**LEGEND**

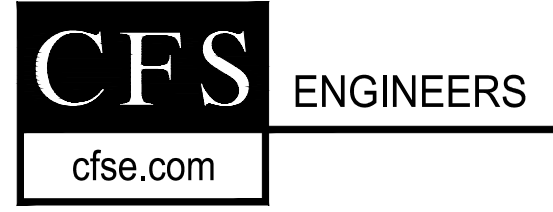
- Pavement  
\*See Alt Bids\*
- 8" Non-Reinforced Conc. Pvmt.
- 6" Concrete Driveway




G:\Shared drives\231016\CADD\Year 2\231016 PH2-Plan Profile-Indiana.dwg

NO.	DATE	REVISION	BY	APP'D

DRAWN BY: ATP  
 APP'D BY: MJM



cfse.com



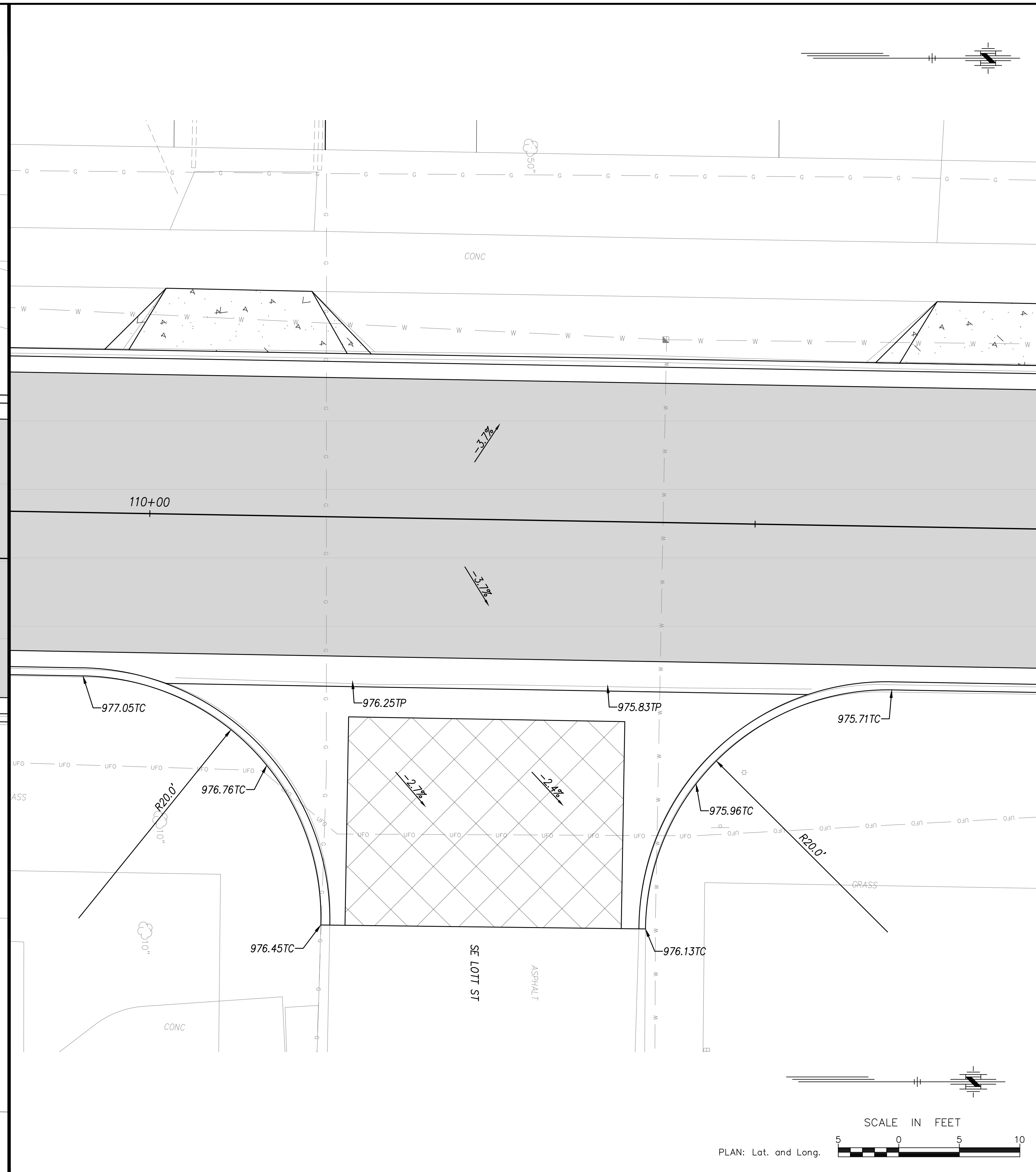
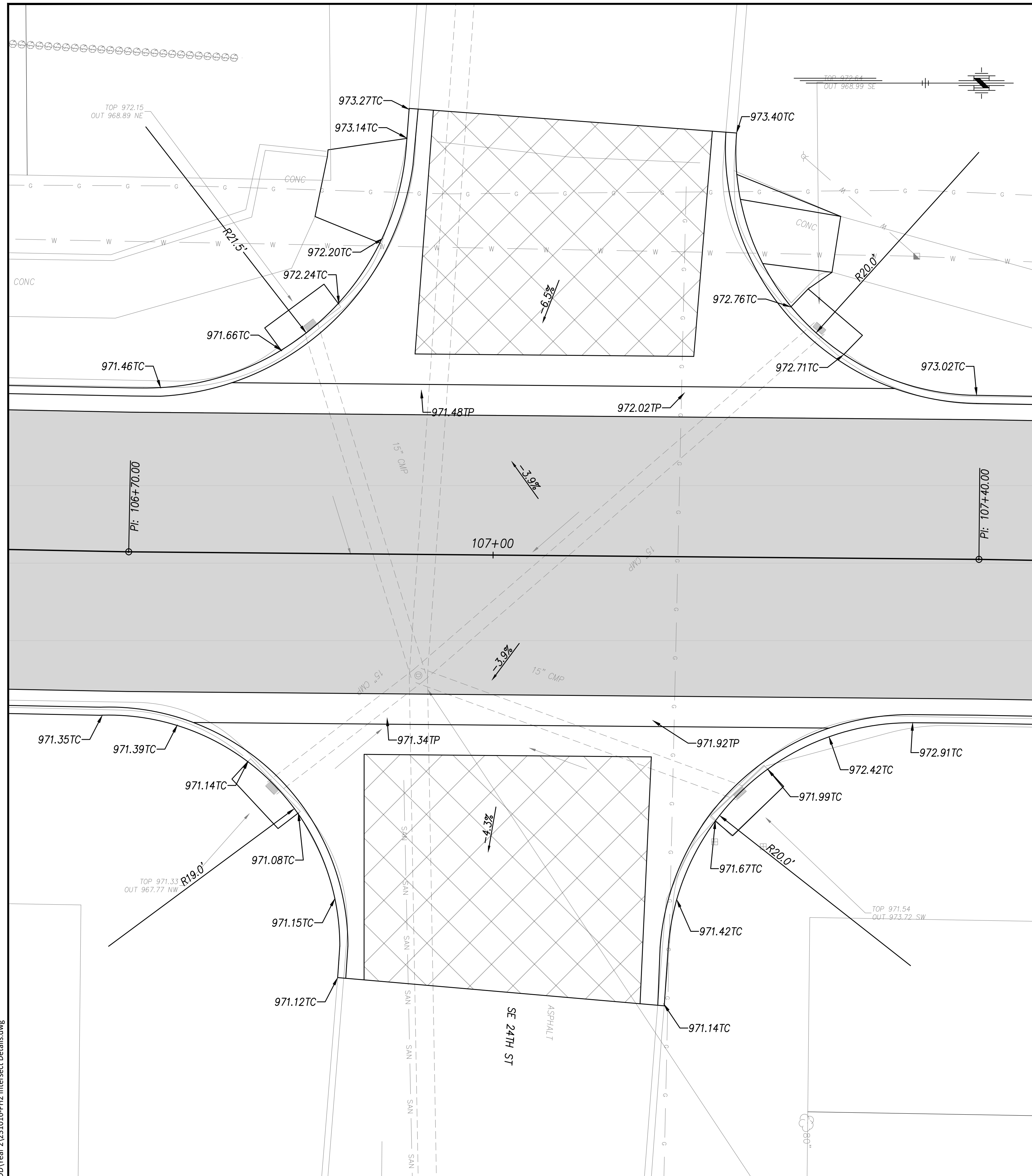
620 SE MADISON St. • 2nd Floor • TOPEKA, KS 66607  
 Phone: (785) 368-3842 • Fax: (785) 368-3881

STREET IMPROVEMENT  
 CITY OF TOPEKA  
 SE INDIANA STREET

PLAN AND PROFILE  
 SE INDIANA STREET

DATE: Feb. 2026  
 SHEET: 08 of 76  
 PROJ.: 841099.09  
501107.10





NO.	DATE:	REVISION	BY:	APP'D

DRAWN BY: ATP  
 APP'D BY: MJM

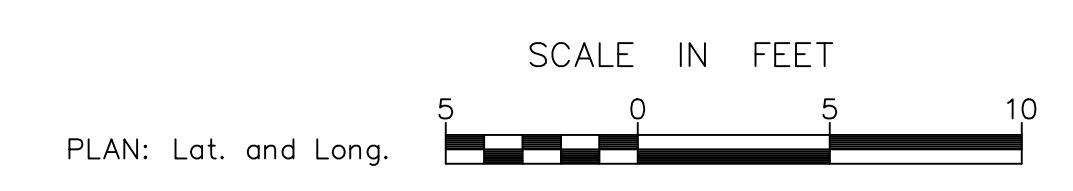
**CFS** ENGINEERS  
 cfse.com

**TOPEKA**  
 Public Works  
 ENGINEERING  
 620 SE MADISON St. • 2nd Floor • TOPEKA, KS 66607  
 Phone: (785) 368-3842 • Fax: (785) 368-3881

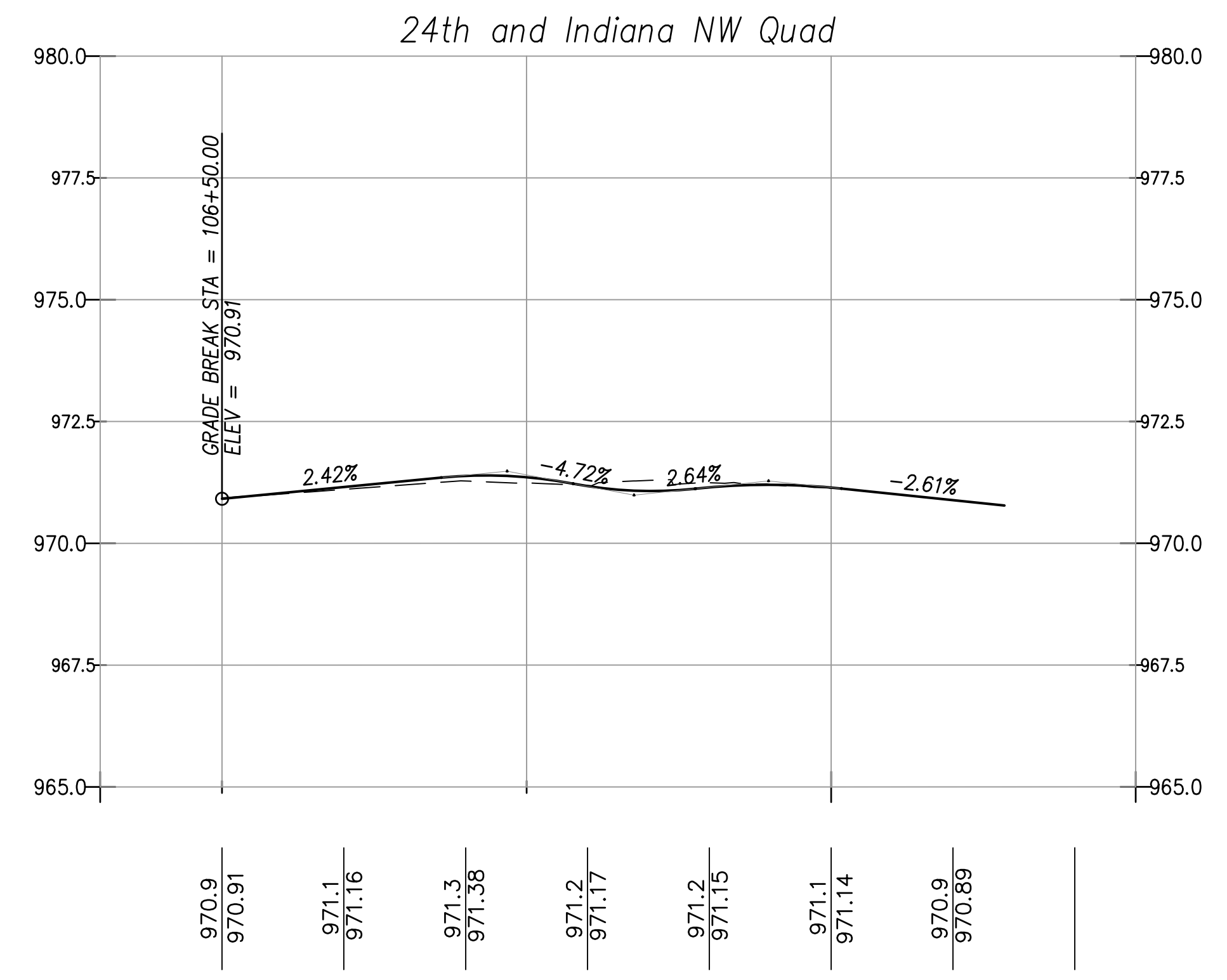
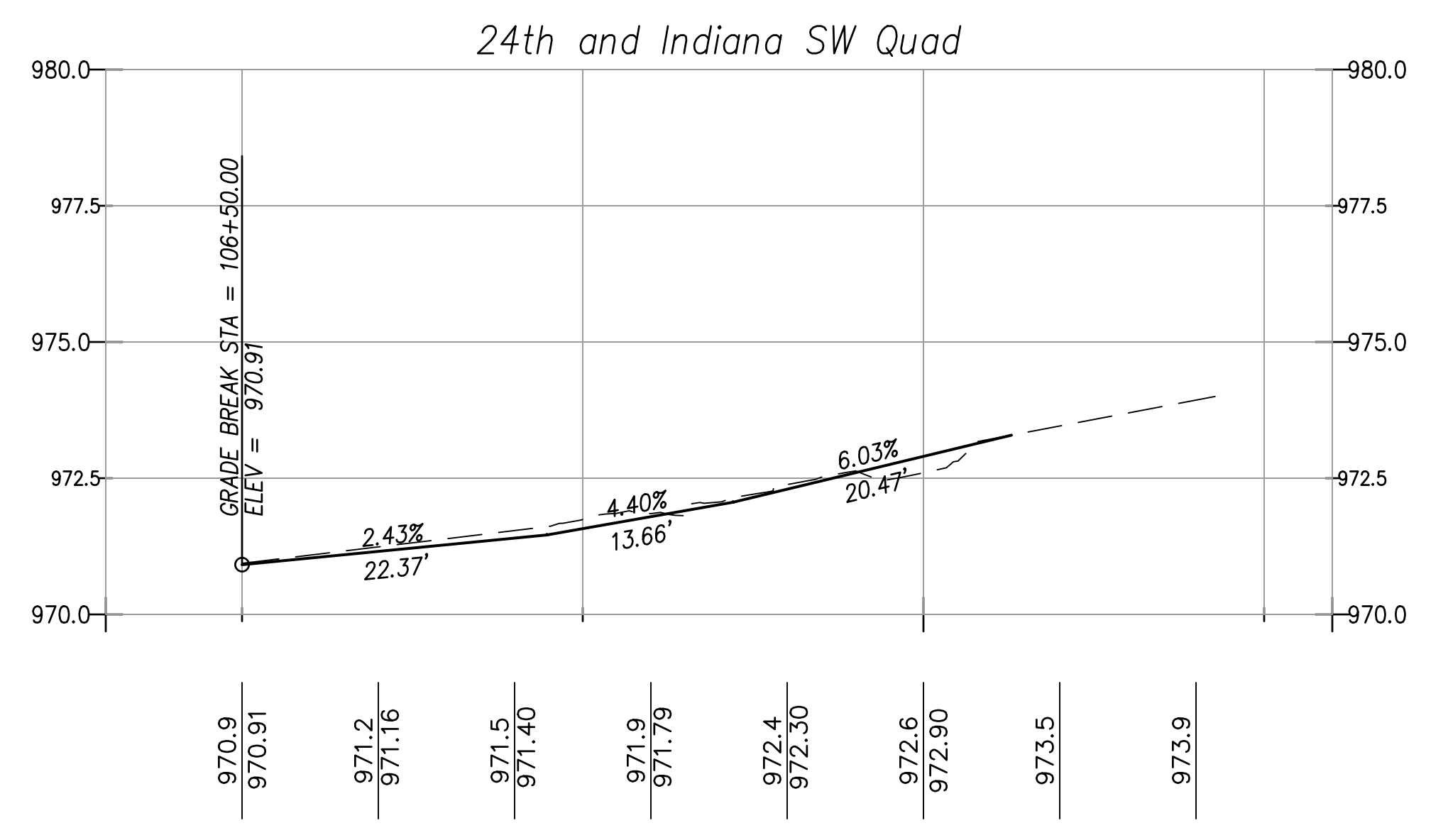
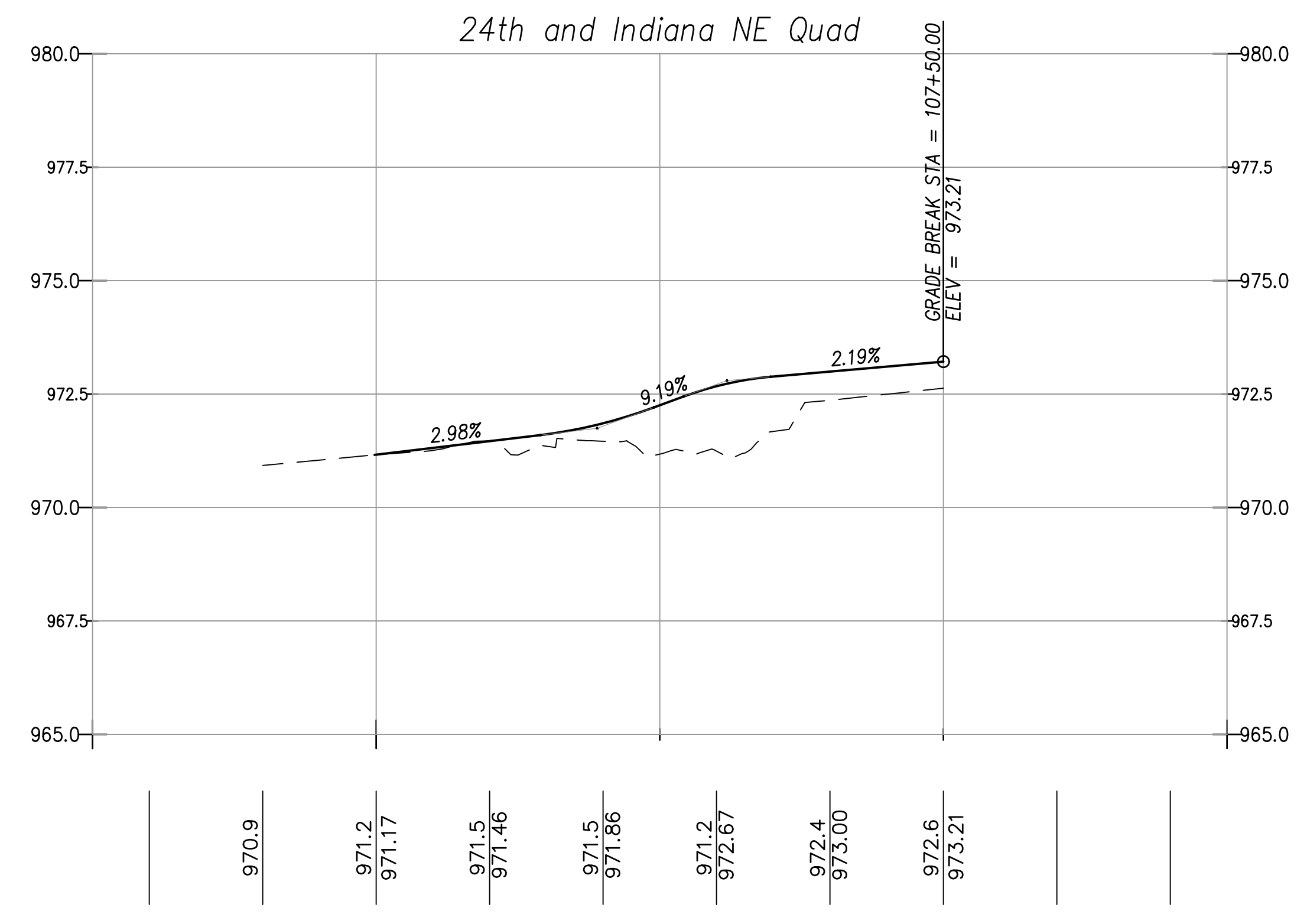
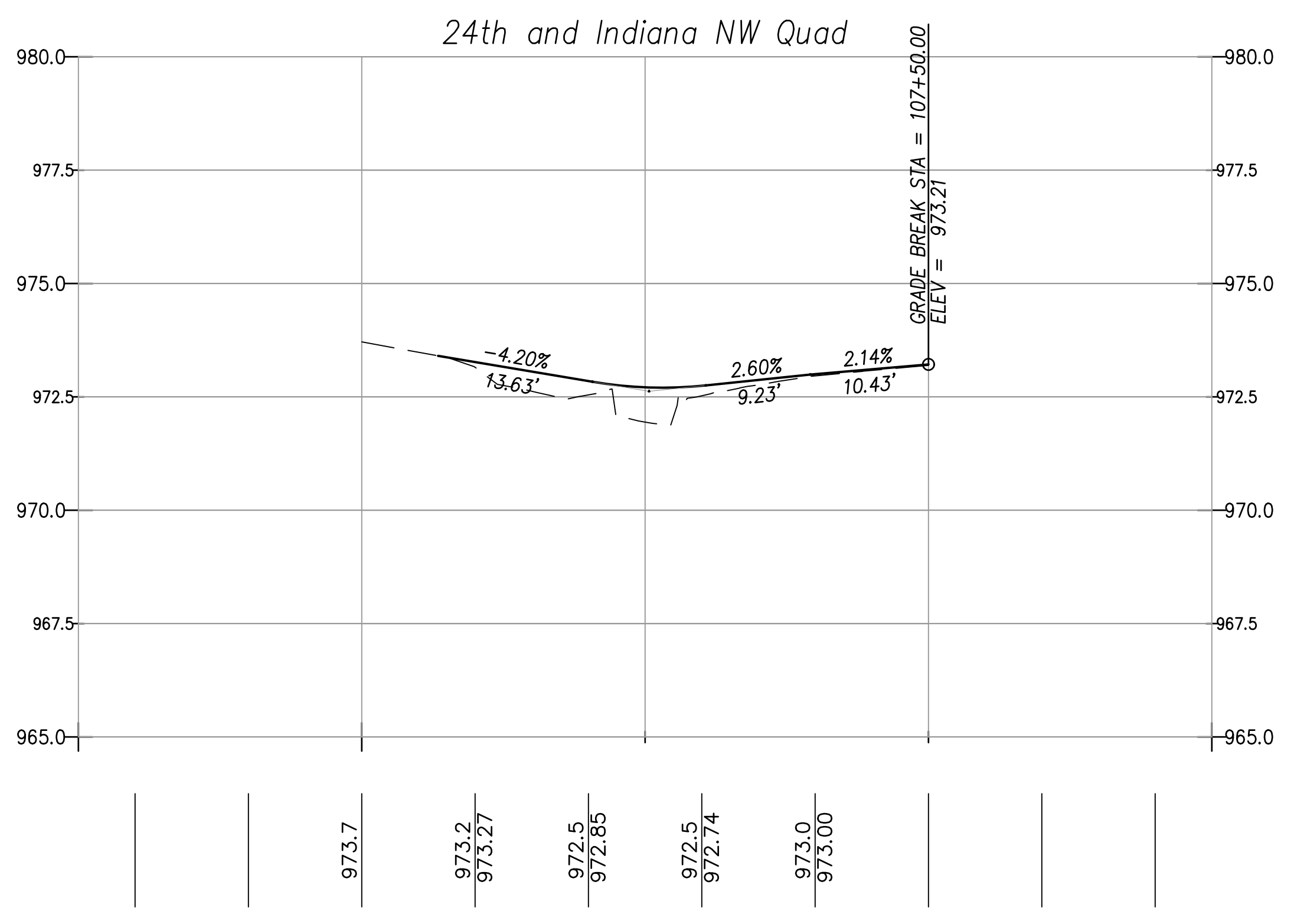
STREET IMPROVEMENT  
 CITY OF TOPEKA  
 SE INDIANA STREET

INTERSECTION DETAILS

DATE: Feb. 2026  
 SHEET: 10 of 76  
 PROJ.: 841099.09  
 501107.10



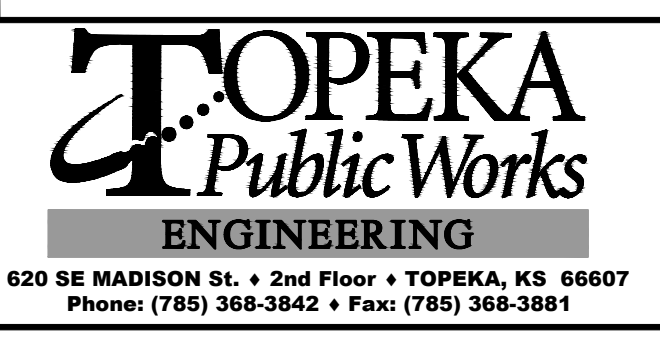
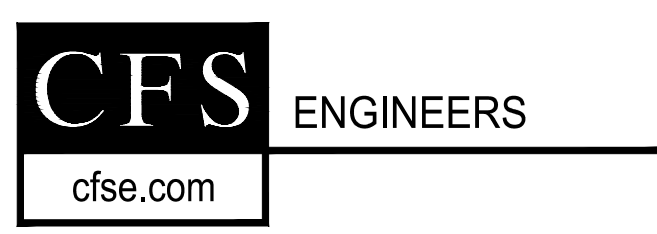
G:\Shared drives\231016\CADD\Year 23\231016-PH2 Intersect Details.dwg



G:\Shared drives\231016\CADD\Year 23\231016-PH2 Intersect Details.dwg

NO.	DATE:	REVISION	BY:	APP'D

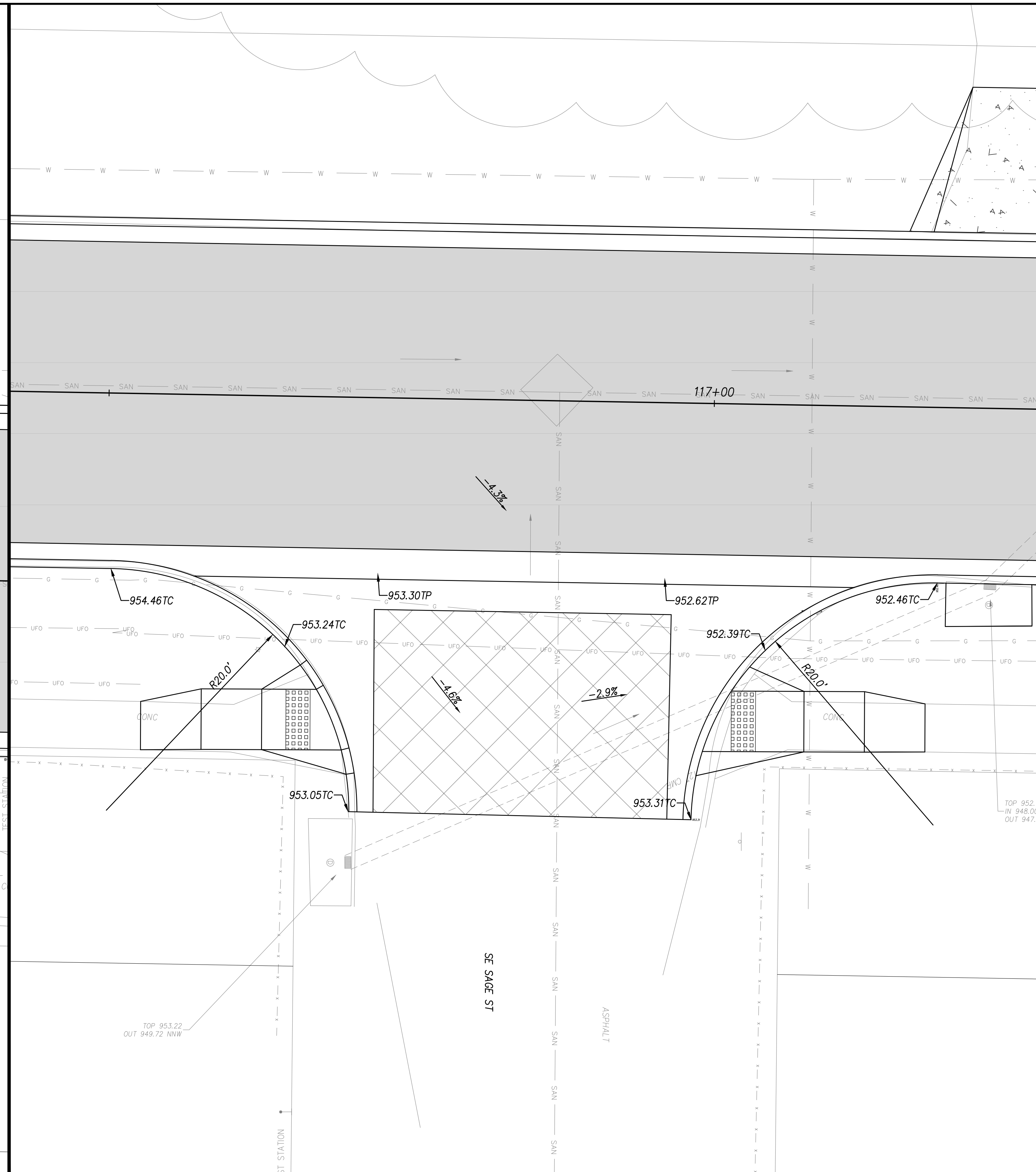
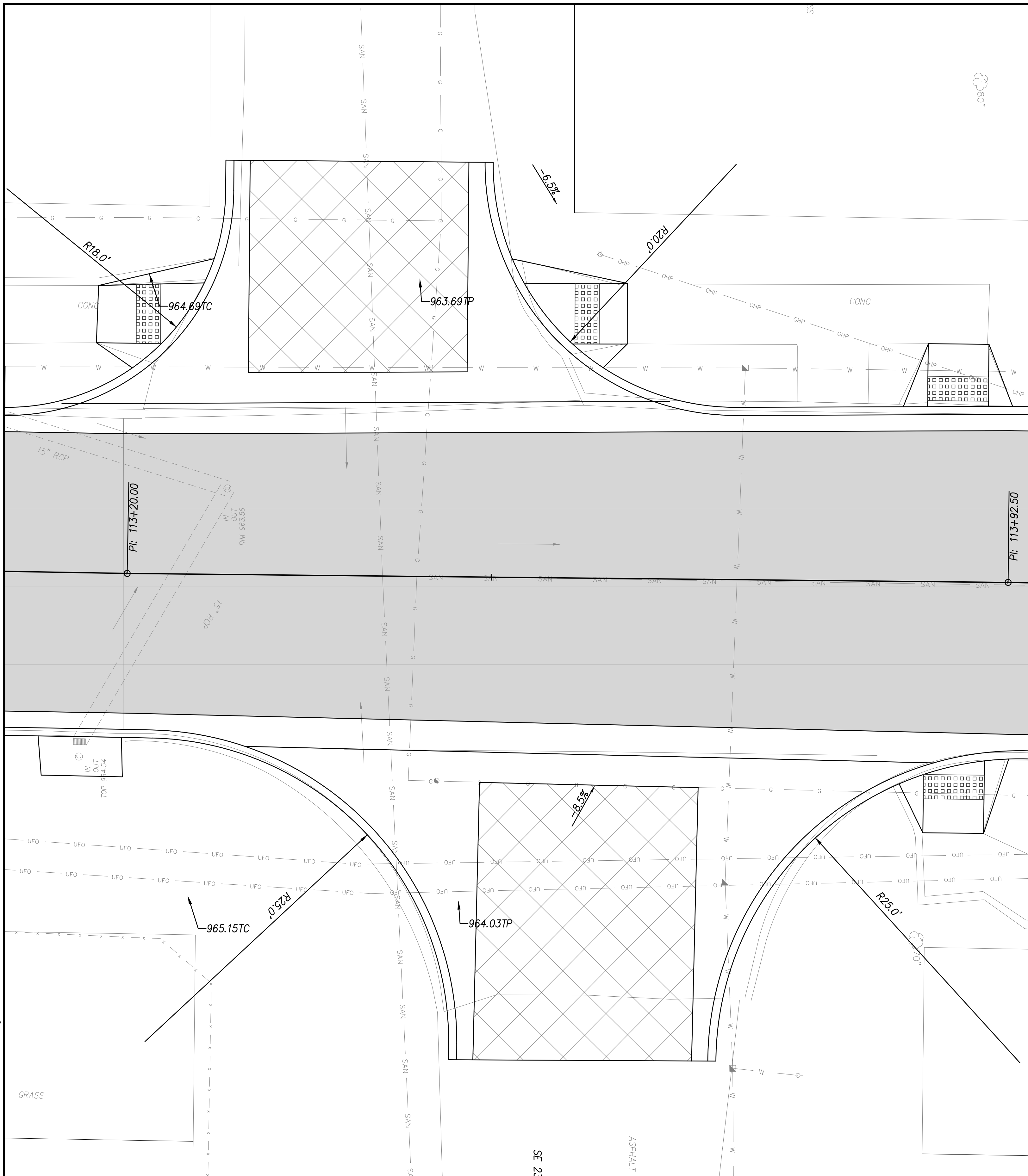
DRAWN BY: ATP  
APP'D BY: MJM



**STREET IMPROVEMENT**  
CITY OF TOPEKA  
SE INDIANA STREET

**CURB RETURN PROFILES**  
SE 24th St. and SE Indiana Ave.


DATE: Feb. 2026  
SHEET: 11 of 76  
PROJ.: 841099.09  
501107.10



G:\Shared drives\231016\CADD\Year 23\231016-PH2 Intersect Details.dwg

NO.	DATE:	REVISION	BY:	APP'D

DRAWN BY: AJP  
 APP'D BY: MJM

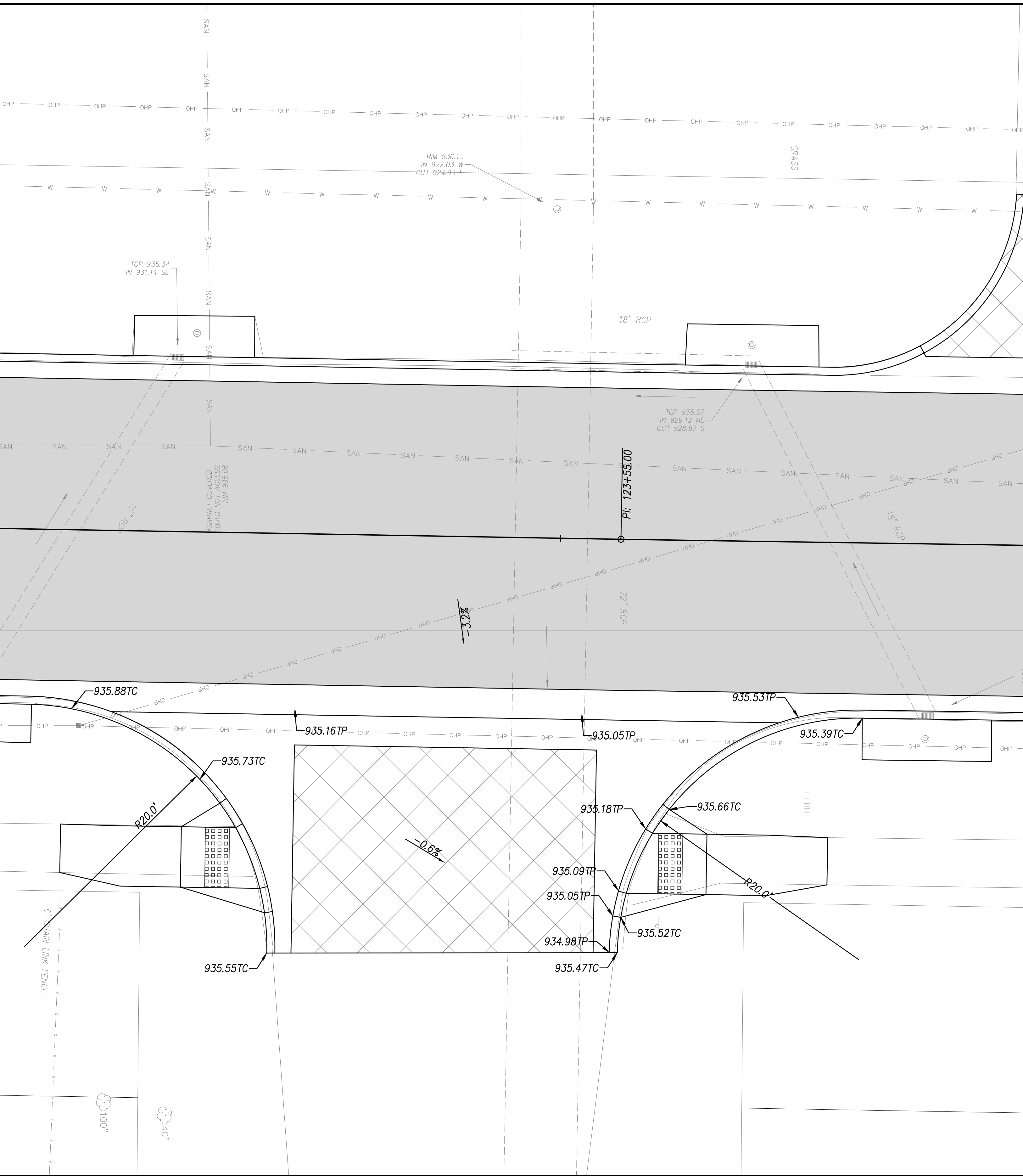
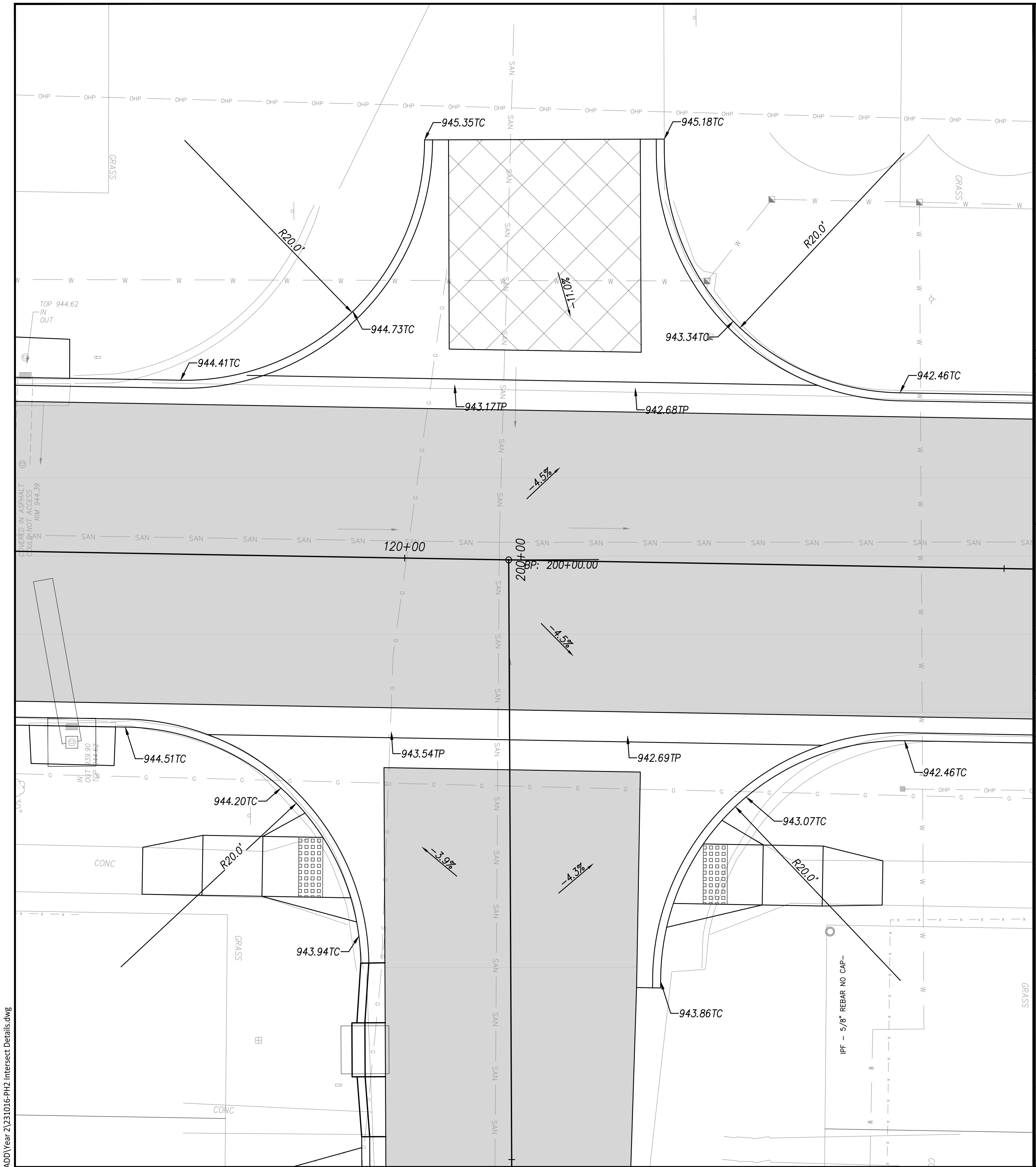

**CFS ENGINEERS**  
 cfse.com

  
**TOPEKA Public Works ENGINEERING**  
 620 SE MADISON St. • 2nd Floor • TOPEKA, KS 66607  
 Phone: (785) 368-3842 • Fax: (785) 368-3881

**STREET IMPROVEMENT**  
 CITY OF TOPEKA  
 SE INDIANA STREET

**INTERSECTION DETAILS**

DATE: Feb. 2026  
 SHEET: 12 of 76  
 PROJ.: 841099.09  
       501107.10



NO.	DATE:	REVISION	BY:	APP'D

DRAWN BY: ATP  
 APP'D BY: MJM

**CFS** ENGINEERS  
 cfse.com

**TOPEKA**  
 Public Works  
 ENGINEERING  
 620 SE MADISON St. • 2nd Floor • TOPEKA, KS 66607  
 Phone: (785) 368-3842 • Fax: (785) 368-3881

STREET IMPROVEMENT  
 CITY OF TOPEKA  
 SE INDIANA STREET

INTERSECTION DETAILS

DATE: Feb. 2026  
 SHEET: 13 of 76  
 PROJ.: 841099.09  
 501107.10

G:\Shared drives\231016\CA\DD\Year 23\231016-Ph2 Intersect Details.dwg